

CEMENTARE

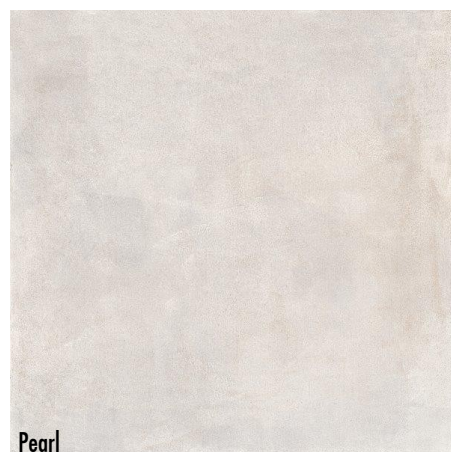
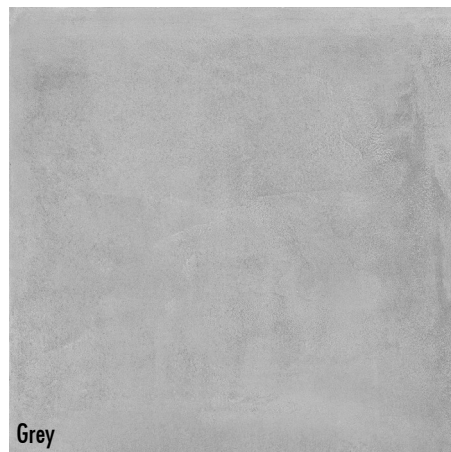
Rectified Glazed Porcelain

KREM



GREY

ACTUAL SIZE DETAIL



- 4**
PE
- >6**
Mohs
- V2**
Shades
- 
ColdRes
- RET**
Rectified

SIZE & PACKING INFO

	Pcs./Ctn.	m ² /Ctn.	Ctn./Pallet	kg/Ctn.
30 x 60cm	8	1,44	40	28
60 x 60cm	4	1,44	40	29
60 x 120cm	2	1,44	40	35

Coefficient of Friction test results exceed A.D.A recommendations ASTM C-1028 >0.60 wet DCOF >0.42

PRODUCT DESCRIPTION

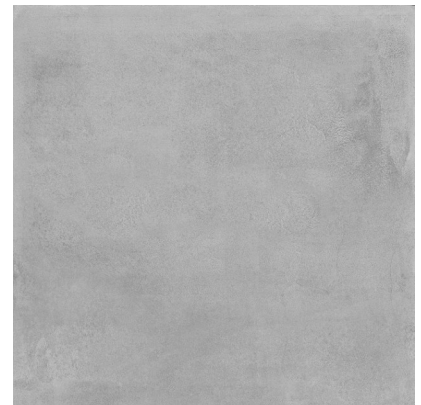
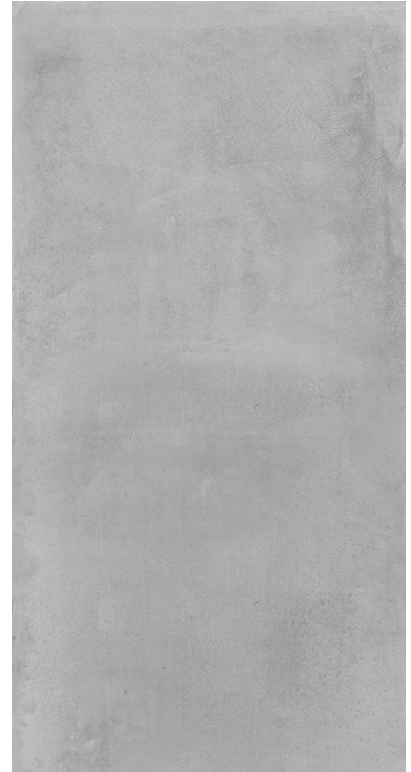
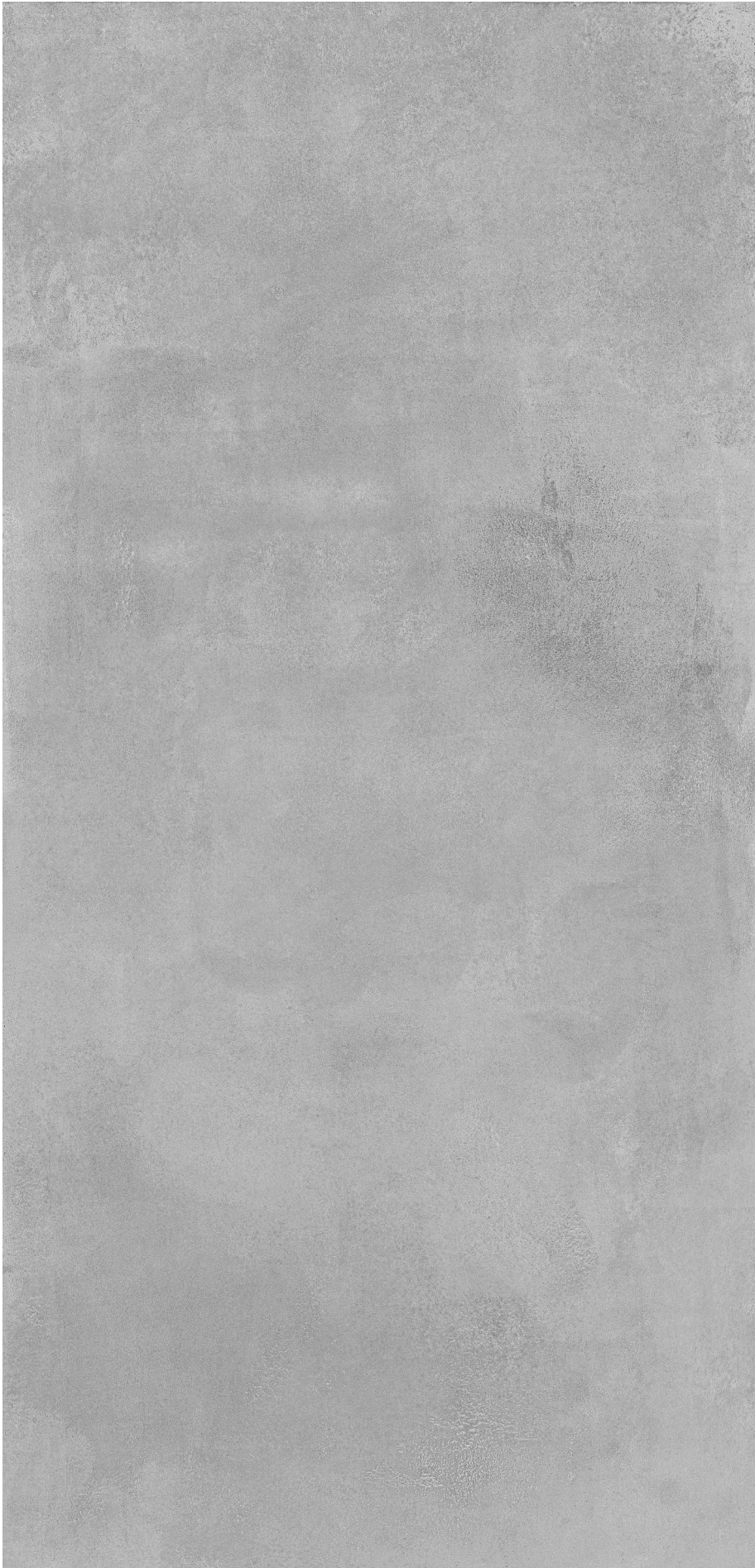
Rectified 30 x 60 & 60 x 60 & 60 x 120 cm Porcelain Floor Tile
Available in Matt, Lapatto and R11 anti-slip finishes.
6 different faces

CEMENTARE

GREY

6 faces

KREM

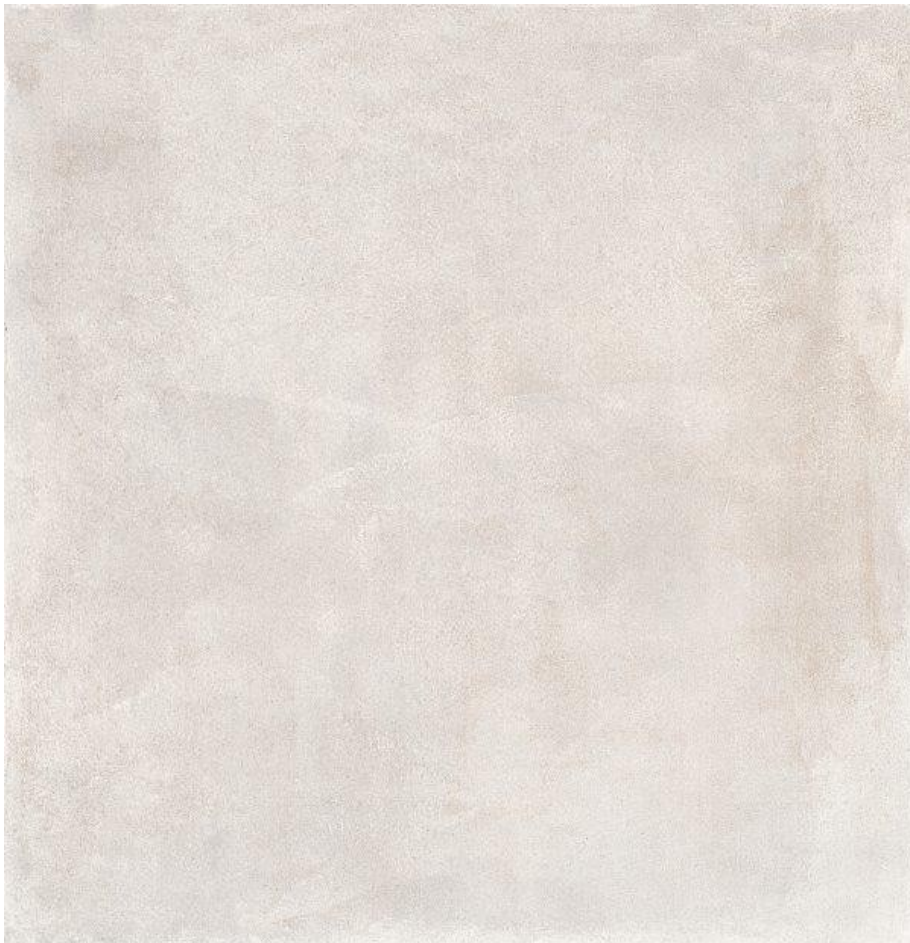
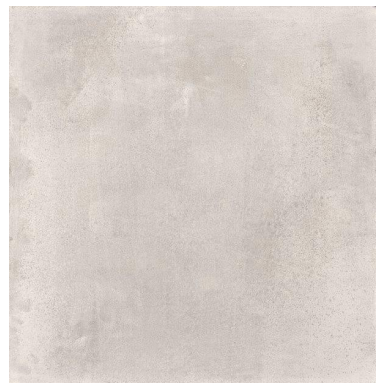
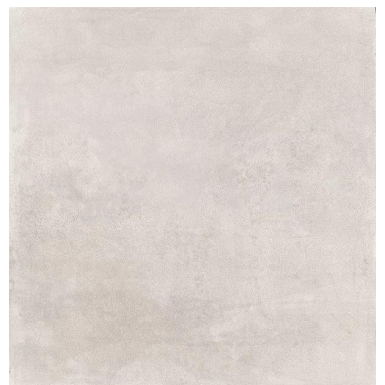
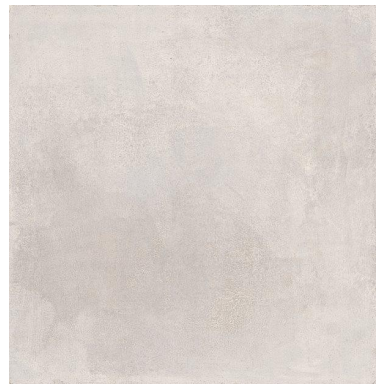
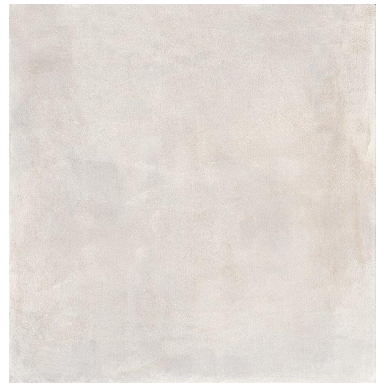
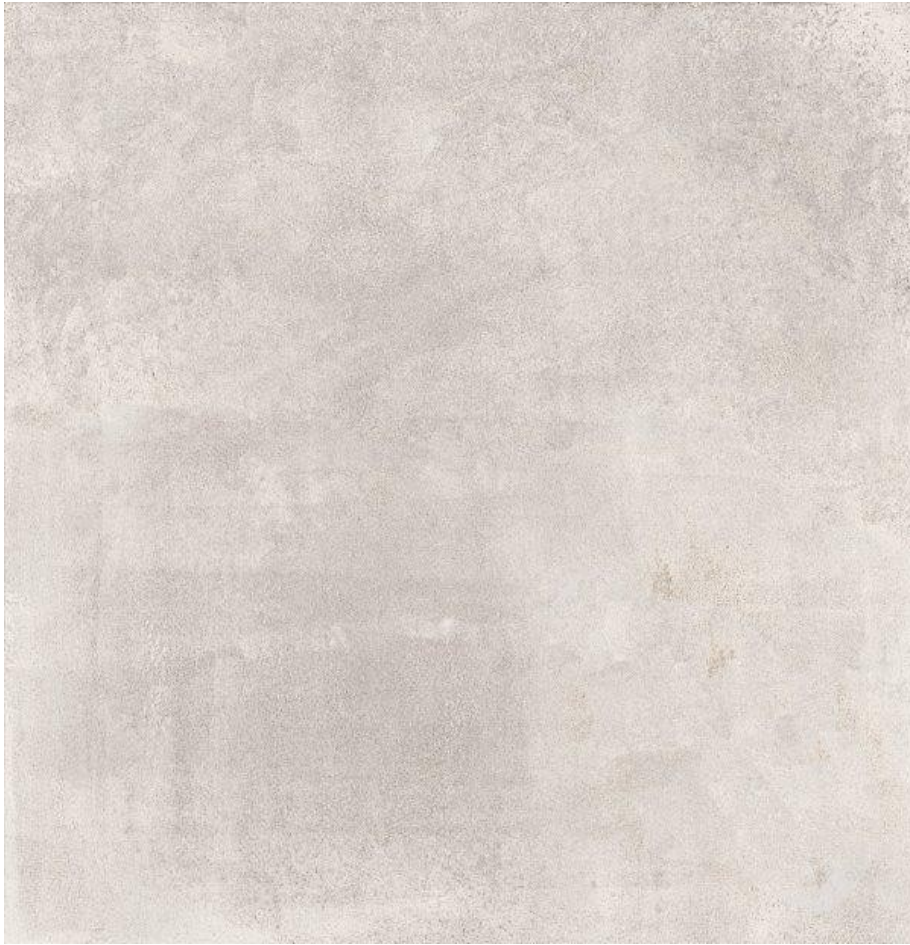


CEMENTARE

PEARL

6 faces

KREM



CEMENTARE PRODUCT SPECIFICATION

GLAZED PORCELAIN FLOOR TILE

Pressed Ceramic Tiles International Norm

ISO 13006-10545/98

GROUP: B1a



No.	Icon	Test item	Unit	Requirements of Standard	Specification	Requirement	
1		Dimensional variation	(%)	length of side	±0.6	< 0.6	Qualified
2		Side straightness	(%)	± 0.5		< 0.5	Qualified
3		Squareness	(%)	± 0.5		< 0.5	Qualified
4		Surface flatness	(%)	Center curvature degree	± 0.5	< 0.5	Qualified
				Warping degree	± 0.5	< 0.5	Qualified
				Side curvature degree	± 0.5	< 0.5	Qualified
5		Surface quality	—	Sighting vertically at a distance of 0.8 meter away from the tile no defect on surface is observed in at least 95% of the	conformed	Qualified	
6		Water absorption	(%)	Average value ≤ 0.5 individual ≤ 0.6	< 0.5 < 0.6	Qualified	
7		Breaking strength	N	When thickness ≥ 7.5mm the Average value ≥ 1300	> 1300	Qualified	
8		Rupture modulus	Mpa	Average value ≥ 35 individual ≥ 32	> 35 > 32	Qualified	
9		Abrasion resistance	Revs	1500	> 1700	Qualified	
10		PEI rating	—	Porcelain Enamel Institute hardness rating	4	—	
11		Hardness	MOHS	Mohs Scale	> 6	Qualified	
12		Frost resistance	—	No cracking after test	conformed	Qualified	
13		Resistance to acids & alkalis	—	not less than grade GB	Grade GA	Qualified	
14		Chemical resistance	—	not less than grade GB	Grade GA	Qualified	
15		Slip resistance	R	Ramp slip rating test	R11	Exterior	
			DCoF	DCoF: 0.42	>0.42	Matt/	