

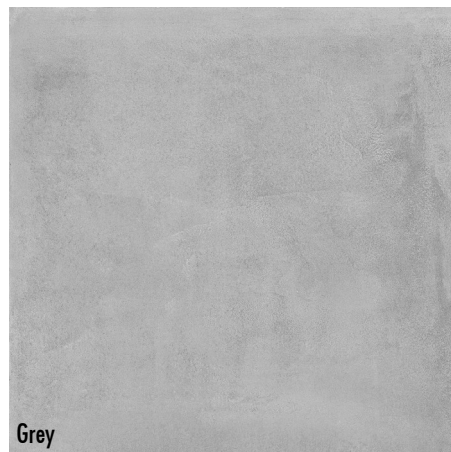
CEMENTARE

Rectified Glazed Floor Tile

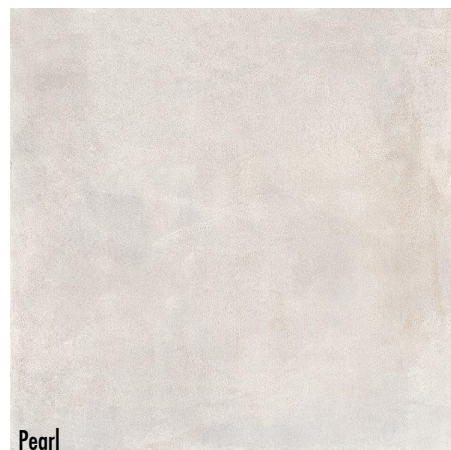
KREM



ACTUAL SIZE DETAIL



Grey



Pearl

>6

Mohs

V3

Shades



ColdRes

RET

Rectified

SIZE & PACKING INFO

| | Pcs./Ctn. | m ² /Ctn. | Ctn./Pallet | kg/Ctn. |
|------------|-----------|----------------------|-------------|---------|
| 30 x 60cm | 8 | 1,44 | 40 | 28 |
| 60 x 60cm | 4 | 1,44 | 40 | 29 |
| 60 x 120cm | 2 | 1,44 | 40 | 35 |

Coefficient of Friction test results exceed A.D.A recommendations ASTM C-1028 >0.60 wet DCOF >0.42

PRODUCT DESCRIPTION

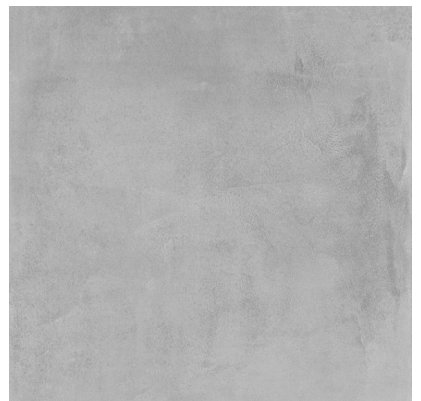
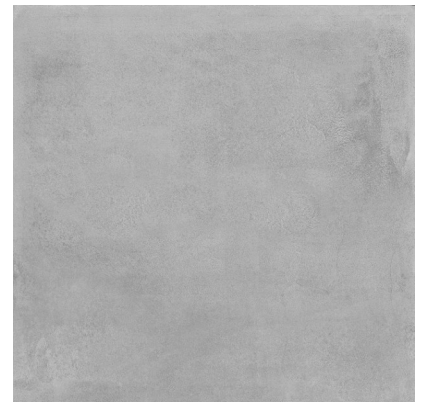
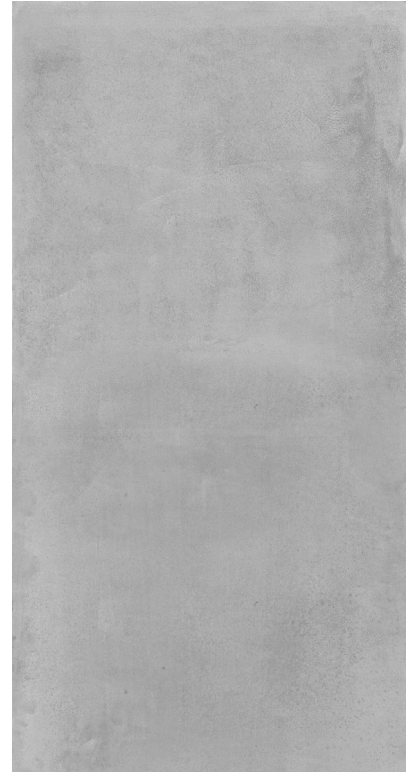
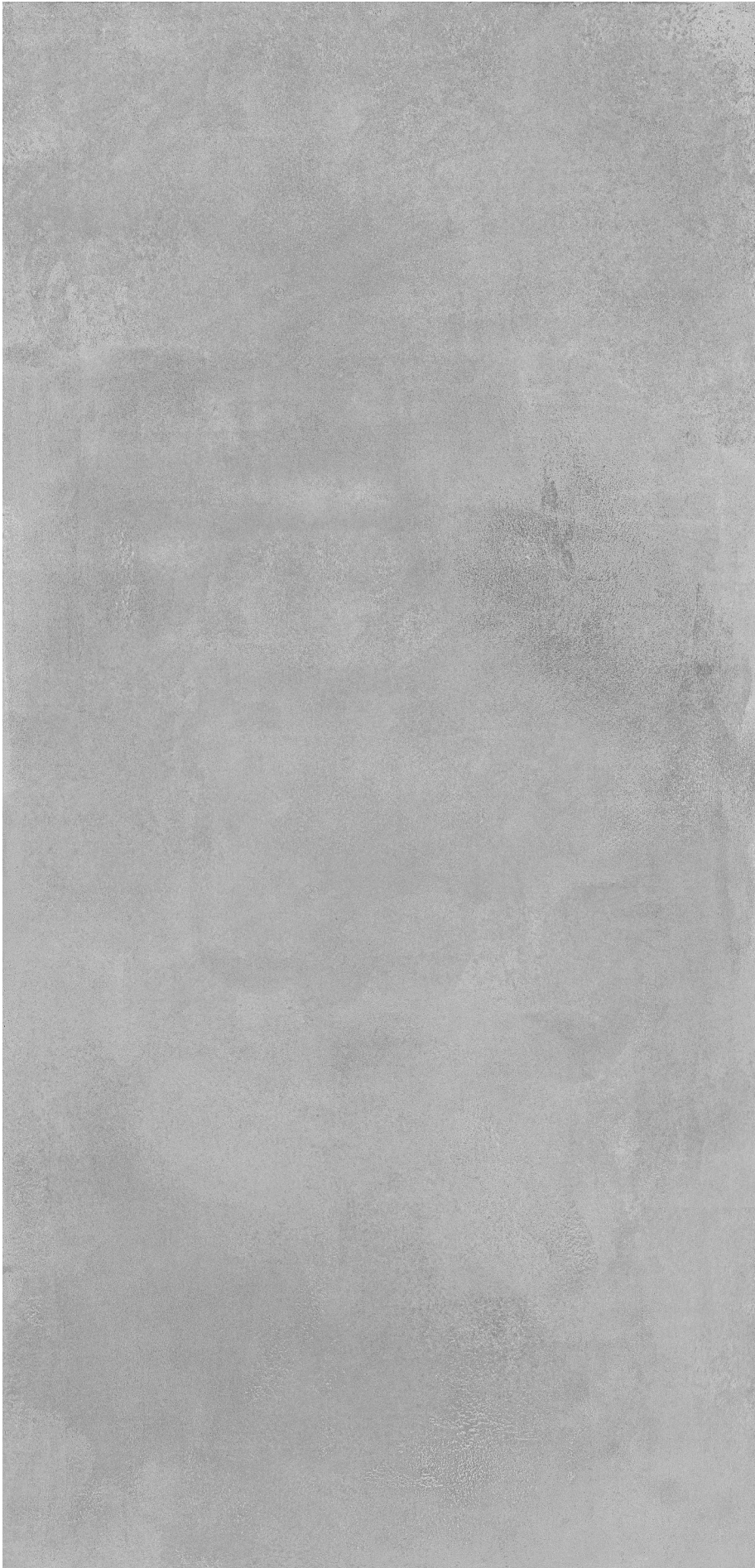
Rectified 30 x 60 & 60 x 60 & 60 x 120 cm Glazed Floor Tile
Available in Matt, Lapatto and R11 anti-slip finishes.
6 different faces

CEMENTARE

GREY

6 faces

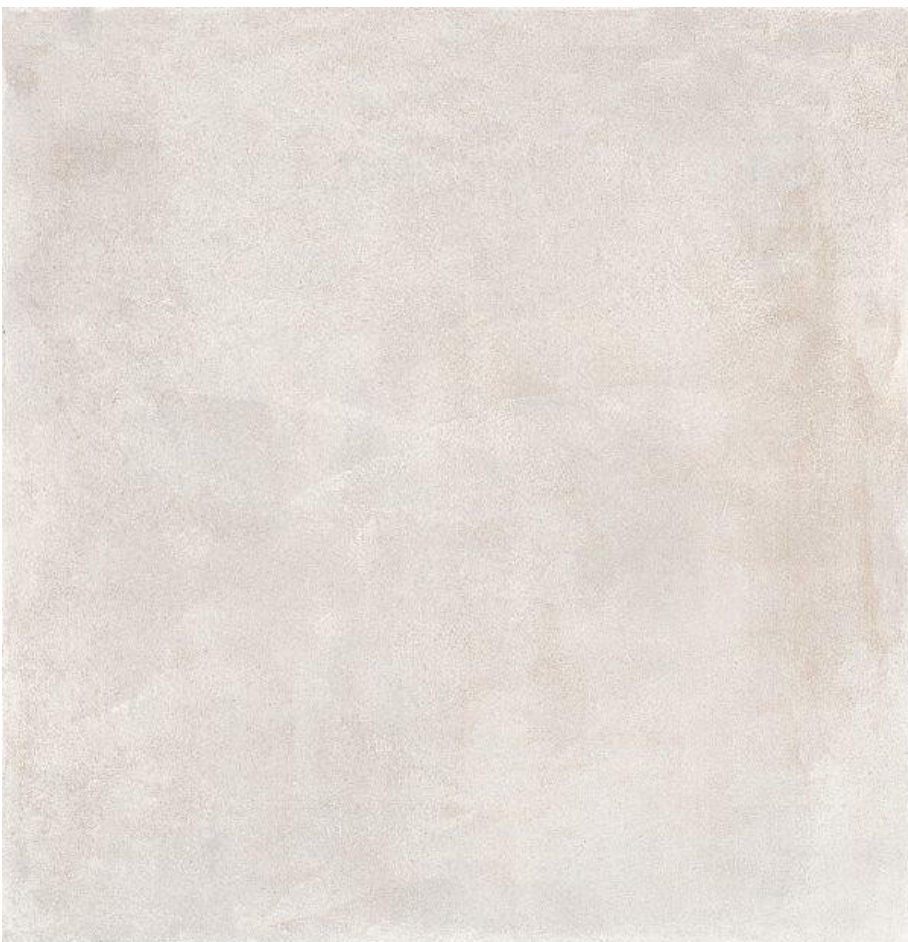
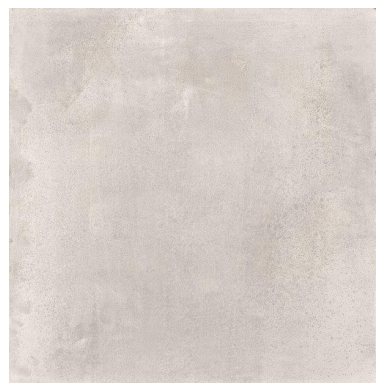
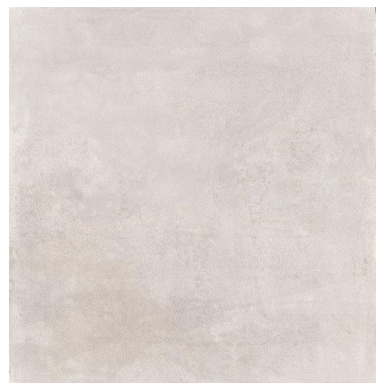
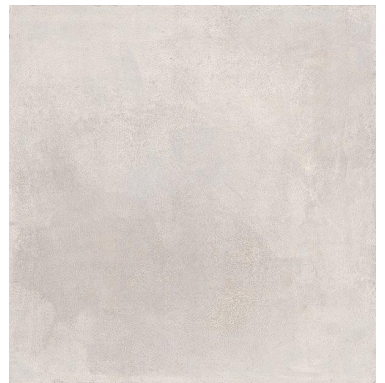
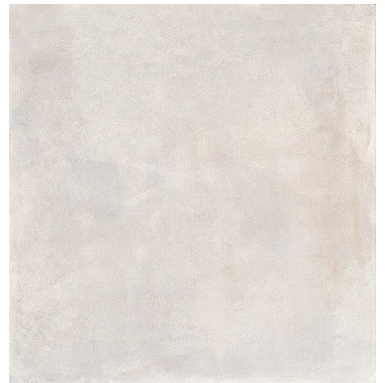
KREM



CEMENTARE

PEARL
6 faces

KREM



CEMENTARE PRODUCT SPECIFICATION

GLAZED FLOOR TILE

Pressed Ceramic Tiles International Norm

ISO 13006-10545/98

GROUP: B1



| No. | Icon | Test item | Unit | Requirements of Standard | Specification | Requirement | |
|-----|------|-------------------------------|------|--|---------------|--------------|-------------------|
| 1 | | Dimensional variation | (%) | length of side | ±0.6 | < 0.6 | Qualified |
| 2 | | Side straightness | (%) | ± 0.5 | | < 0.5 | Qualified |
| 3 | | Squareness | (%) | ± 0.6 | | < 0.6 | Qualified |
| 4 | | Surface flatness | (%) | Center curvature degree | ± 0.5 | < 0.5 | Qualified |
| | | | | Warping degree | ± 0.5 | < 0.5 | Qualified |
| | | | | Side curvature degree | ± 0.5 | < 0.5 | Qualified |
| 5 | | Surface quality | — | Sighting vertically at a distance of 0.8 meter away from the tile no defect on surface is observed in at least 95% of the tile | | conformed | Qualified |
| 6 | | Breaking strength | N | When thickness ≥ 7.5mm the Average value ≥ 1100 | | > 1100 | Qualified |
| 7 | | Rupture modulus | Mpa | Average value ≥ 30 individual ≥ 27 | | > 30 > 30 | Qualified |
| 8 | | Abrasion resistance | Revs | 1500 | | > 1500 | Qualified |
| 9 | | Hardness | MOHS | Mohs Scale | | > 6 | Qualified |
| 10 | | Frost resistance | — | No cracking after test | | conformed | Qualified |
| 11 | | Resistance to acids & alkalis | — | not less than grade GB | | Grade GA | Qualified |
| 12 | | Chemical resistance | — | not less than grade GB | | Grade GA | Qualified |
| 13 | | Slip resistance | R | Ramp slip rating test | | R11 | Exterior |
| | | | DCoF | DCoF: 0.42 | | >0.42 | Matt/ Exterior |